

# MGO 2023

Information

# Thank you for your interest in Gospel outreach in Malawi!

- It is estimated that around half of the 22 Million population Malawi is under the age of 16. What an opportunity to save lives from sin - not just souls from hell!
- We hope this video will answer most of your questions, however please contact us should you need further information.



# Who are the Organisers?

- This trip is being organised by Southern Africa Literature Trust, a UK Registered Charity run by believers fully committed to the spread of the Gospel and NT assembly principles.
- The UK Trustees are:
  - Stephen & Gail Harper - commended to the Lord's work in Malawi
  - Jim & Janet McMaster - commended to the Lord's work in NE England
  - Sarah Bond - lecturer in Nursing with Ulster University



# Where are we going?

- The outreach will be centred on the Thondwe area (Southern Region) where SALT is constructing a resource centre.
- Accommodation will be in the nearby university city of Zomba, formerly the colonial capital of Malawi.



## When are we going?

---

Main outreach event will be 7 - 16 August 2023, but you are welcome to extend your stay before / after those dates by prior arrangement.

---

You are encouraged to find time to enjoy some of Malawi's excellent game-viewing hospitality.



# What will we be doing?

We will be involved in Gospel literature distribution, open-air, prison and village evangelism. The actual activities undertaken will depend upon the mix of people and abilities available - there will be an emphasis on Children's outreach.

Although there are many vernacular languages spoken in Malawi, the majority language is Chichewa. Many people are able to speak English in the urban areas - we also have good translators on hand.

We will also prioritise good times of fellowship together, with daily devotionals when we will be able to encourage one another from the Word of God. We want this to be a very enjoyable, as well as profitable experience.



# Who is eligible?

- This trip is open to any believer with a genuine interest in the spread of the Gospel and the ability to work well with other Christians. We expect that each participant will be in active, happy fellowship in a local assembly, and have their commendation in this venture.
- In the interests of harmony within the group, we may at our sole discretion, decline the application of any person we believe would be unsuitable.
- Under-18s are not usually eligible unless accompanied.



# Who will you be working with?

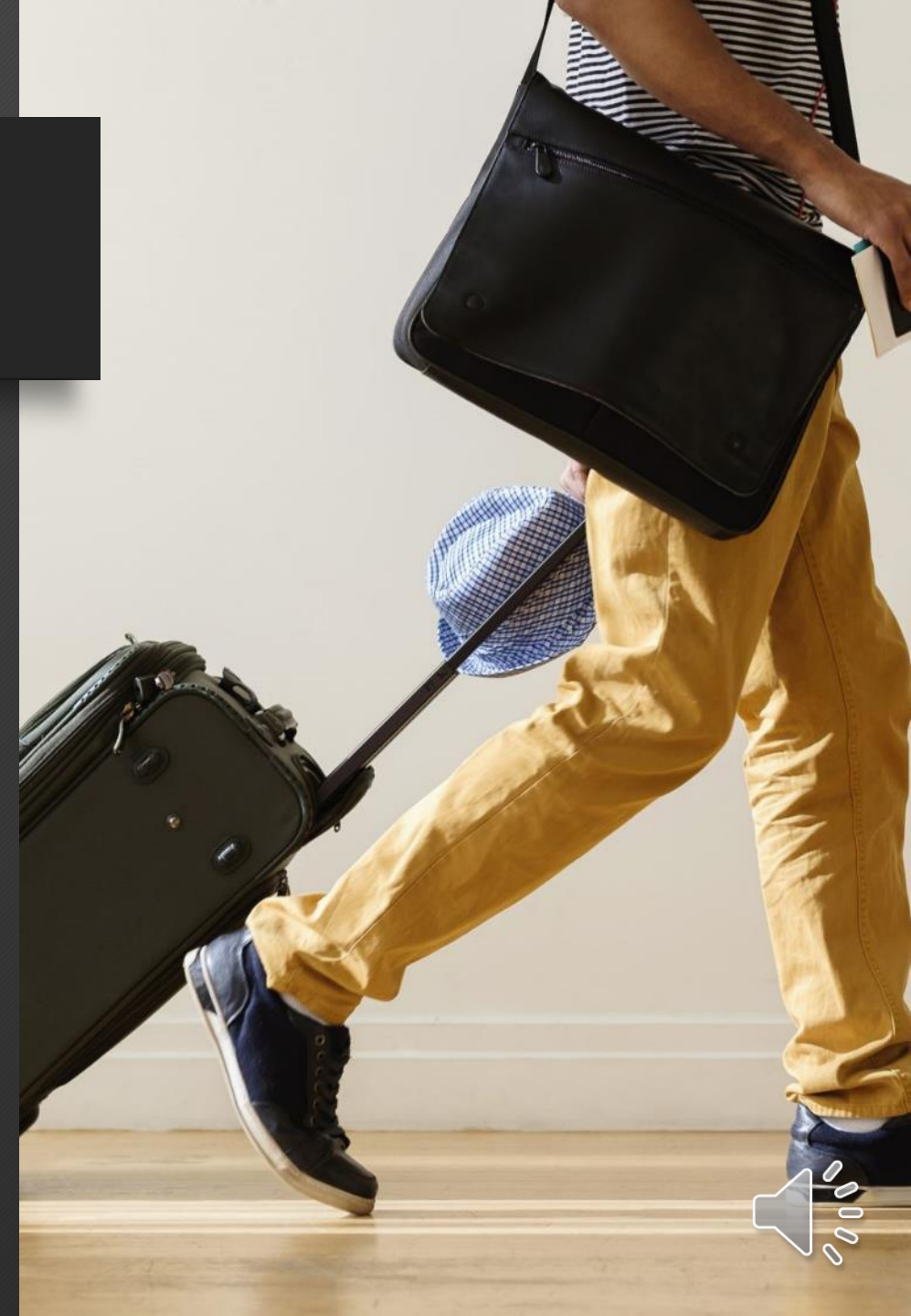
- You will be working with experienced missionaries to Malawi and/or selected local believers who have their confidence. You will not be left without appropriate supervision/support.





# Accommodation

- For this trip, we had hoped to be able to offer accommodation at our our facility at Saidi, but unfortunately the accommodation has not been built yet.
- Basic but comfortable accommodation will be provided in a B&B lodge in the nearby city of Zomba.
- All meals will be provided.
- Bedding and towels will be provided.



# Health Requirements



- You should be in generally good mental and physical health and fit to travel.
- You should be aware of the risk of Malaria and take appropriate precautions. We will endeavour to ensure you have a mosquito net, however you should consult your GP (Family Doctor) about an appropriate course of anti-malarial prophylaxis and other necessary vaccinations, as well as any existing health conditions.
- Be aware, some people find it emotionally difficult to cope with the levels of poverty and suffering evident in Malawi.
- **Presently, the government of Malawi requires all visitors who are not fully vaccinated against Covid-19 to present a negative PCR test. (Subject to change at short notice)**



# Personal Safety

- Malawi is relatively peaceful and crime-free; however it is always wise to take sensible precautions.
- You will receive advice on this nearer the time, but you should be very wary of creating opportunities for opportunistic thieves. If a valuable item is not really necessary, please consider leaving it at home!



# Dietary Issues

- Although you may not be able to get many of your favourite treats, we will as far as possible, prepare local ingredients in a way that looks and tastes like food you are used to at home.
- You will have opportunity to sample local dishes, should you wish.
- It is essential that you tell us if you have any special dietary requirements so that we can advise you whether or not we will be able to accommodate them.



## Will there be any leisure time?

- Yes.
- There will be appropriate free leisure time during our stay in Malawi, and we will organise one or two optional sightseeing trips and a trip to a local National Park for Big Game viewing.



# How much will it cost?

- We will subsidise the trip to cap the cost of accommodation and food at US\$40 / £30 per day.
- Apart from this subsidy, we also incur significant expenses associated with transport and printing etc., so if you are able to voluntarily contribute more than this, we will be most grateful.
- You will have to pay for the cost of your travel to/from Malawi and any leisure trips or excursions before/after the outreach.



# Insurance & Visa Requirements

- We require proof of adequate Travel Insurance to cover cost of emergency treatment and/or repatriation in case of accident or illness.
- Visas are required for most foreign nationals and can be obtained online at a cost of approx US\$75. Processing can be slow, so you are advised to apply well in advance.
- Visas can sometimes be obtained on arrival, but the rules change, and you should apply online, if possible.



# Travel arrangements

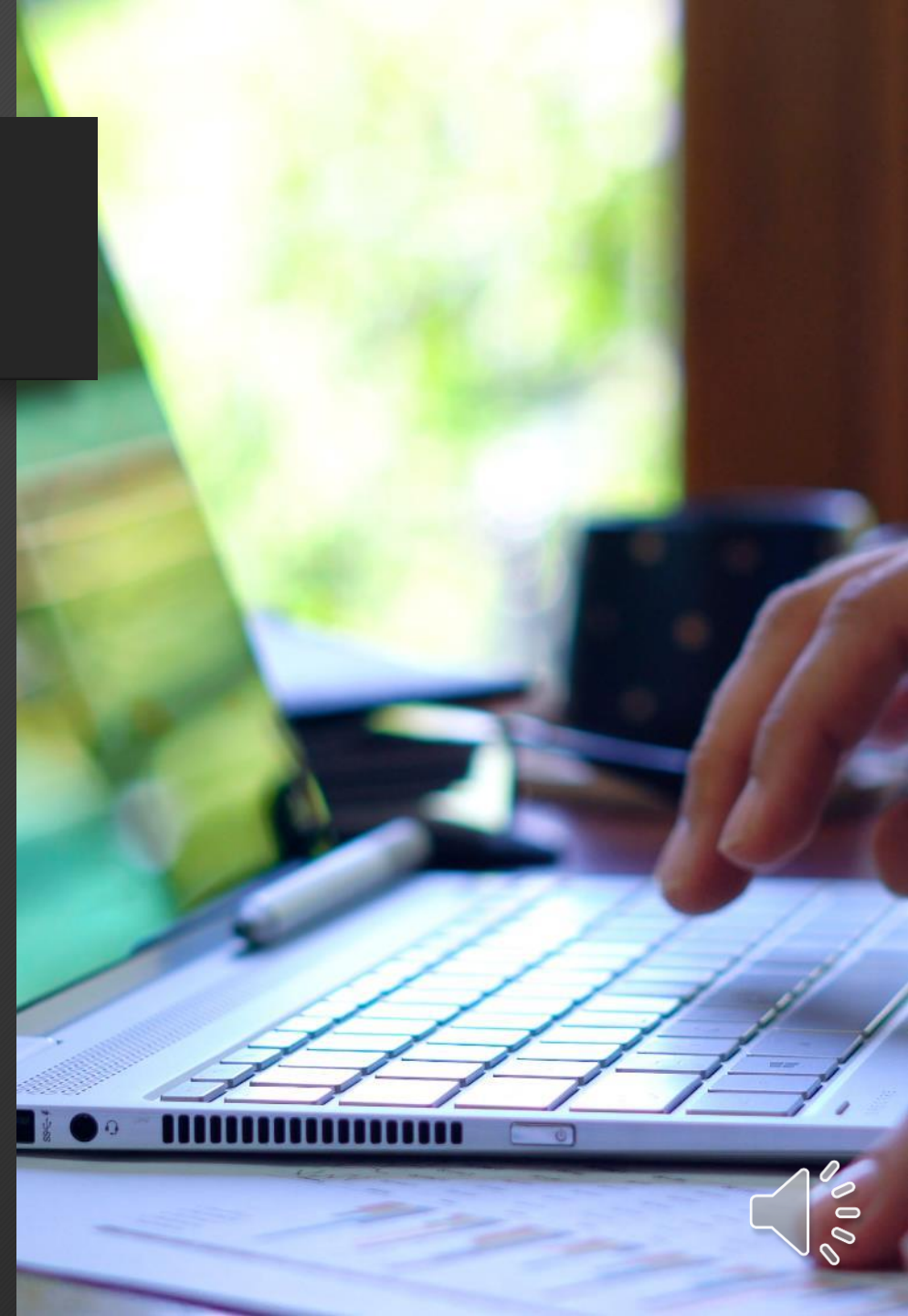
- You will have to pay your air travel costs to/from Malawi. Options are somewhat limited.
- For participants from British Isles, we may be able to help arrange this with Ethiopian Airlines from Dublin / Manchester or London via Addis Ababa .
- Flights can normally be secured on payment of a deposit. If connecting flights are necessary to/from your local airport you should make these arrangements yourself, or we may be able to make them for you through our agents. (Participants making their own travel arrangements should confirm plans with the organisers before booking.)
- Suitable arrival and departure days will be specified in due course.





# How do I apply?

- To assist us with planning please apply online as soon as possible.
- Even a tentative response will be helpful and will ensure you are kept informed.
- Details at <https://southernafricaliteraturetrust.com/mgo-2023/>



# MGO 2023

Thank You!